

Linear

MIMI Poki RGB Fixture Guide

KKDÖ

Outdoor | Surface | RGB output

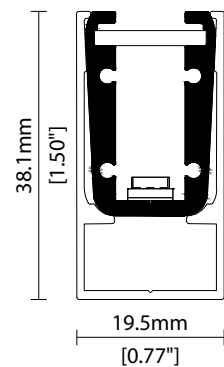


Key applications

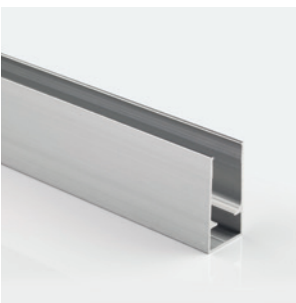
- ✓ Architectural detail
- ✓ Bathrooms
- ✓ Building facades
- ✓ Direct lighting
- ✓ Exterior
- ✓ Public spaces
- ✓ Special effect
- ✓ Wall grazing
- ✓ Wall mounting
- ✓ Window reveal
- ✓ Wet area

Key features

- ✓ Custom lengths
- ✓ Constant Voltage (CV)
- ✓ Diffusion: homogenous
- ✓ Direct view
- ✓ IP44 moisture resistant
- ✓ IP67 waterproof
- ✓ RGB



MOUNTING METHODS



KKCR-02 Channel

Linear

MIMI Poki RGB

Specification sheet

KKDC



Dimensions	H38.1/W19.5/L103-2020mm (H1.5/W0.77/L4.05-79.53in)
PCB Cut-point	83.3mm increment/2000mm max (3.28in increment/78.74in max)
LED Pitch	13.9mm-72LED/m (0.55in - 22LED/ft)
Chip	RGB
Cover/Optics	Clear (30°) / Diffused (80°)
CCT	Red 620-625nm/Blue 455-460nm/Green 520-525nm
LED binning	5nm tolerance
CRI	N/A
Lifetime	50,000 hours @ 25°C (50,000 hours @ 77°F)
Operating temp	$T_a = -25$ to 50°C (T_c max = 68.6°C) $T_a = -13$ to 122°F (T_c max = 155.5°F)
IP Rating	IP44/67
Finish	Silver anodised
Mounting	Surface mounting via cable raceway
Power feed	Sheathed hardwire tails or male/female connectors
Control	DMX/DALI



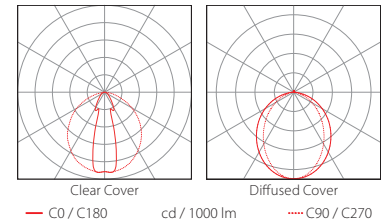
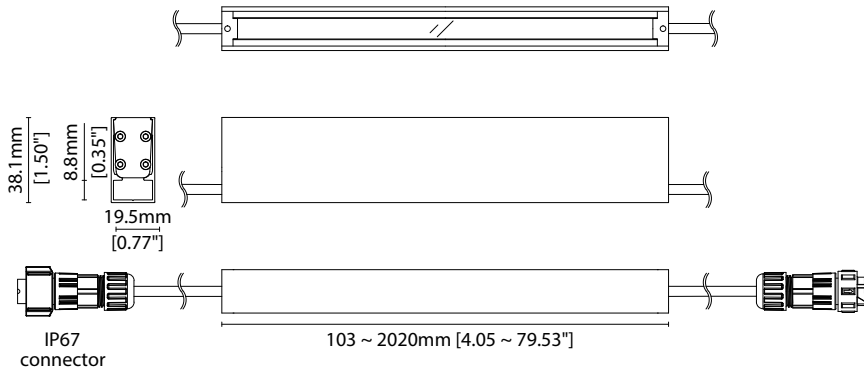
Power consumption	Supply voltage	Supply current
15.6W/m (4.75W/ft)	24V DC	0.65A/m (0.20A/ft)

Clear Cover

Red: 50lm/m (15lm/ft)
Green: 107lm/m (33lm/ft)
Blue: 18lm/m (5lm/ft)
RGB: 155lm/m (47lm/ft)

Diffused Cover

Red: 33lm/m (10lm/ft)
Green: 72lm/m (22lm/ft)
Blue: 12lm/m (4lm/ft)
RGB: 104lm/m (32lm/ft)



Data derived from IESNA LM-79-08 accredited testing of production samples.

See KKDC website for product document updates.

www.kkdc.lighting

MIMIPokiRGBS-03.04EN-20240515

MIMI Poki RGB

Code Table



FIXTURE

Model	Finish	Cover ¹	Grade	LED	Colour (CCT)	Length Availability ²	IP	Cable Length	Power Feed ³	Input		
MIMI Poki	PK	Silver Anodised	SA	Clear	B	m 103.3-2020mm 83.3mm increments	IP44	44	300mm/ 11.81"	Single ø4.3mm sheath tail	S00A	DC 24V
				Diffused	C		IP67 ⁴	67				
						i 4.07-79.53in 3.28in increments				Double ø4.3mm sheath tail	D00A	
						(Specify length code OR total run length)				Single ø4.3mm sheath IP67 connector ^{5,6}	S67A	
										Double ø4.3mm sheath IP67 connector ^{5,6}	D67A	

¹ Refer to **Cover/Lens Options** on **Options** pages

² Refer to **Length Availability List** or enter total run length instead of length code

³ Refer to **Power Feed Options** on **Options** pages

⁴ Due to the clear, flush potted polyurethane top layer on IP67 MIMI Poki a colour shift of +/-20K should be expected

⁵ IP rated connectors do not fit inside the cable raceway

⁶ IP67 connectors are used for both IP67 and IP44 product housings

Code Example:

PK	-	SA	-	C	-	s	-	501	-	RGB	-	m	-	520	-	67	-	0300	-	D67A	-	g
MIMI Poki		Silver Anodised		Diffused				501		RGB		m		519.8mm		IP67		300mm/11.81"		Double ø4.3mm sheath IP67 connector		DC 24V

ACCESSORIES

Mounting Accessories

KKCR-02 Channel

* Refer to **Mounting accessories** on **Accessories** pages

Connection Accessories

CN67-4P-0300 IP67 4 PIN RGB male & female 300mm/11.81" pair

CN67-4P-1000 IP67 4 PIN RGB male & female 1000mm/39.37" pair

CN67-4P-3000 IP67 4 PIN RGB male & female 3000mm/118.11" pair

* Refer to **Power feed** on **Accessories** pages

Exterior Junction Boxes

KKJB-07 IP67 Slim J-Box

KKJB-07R Potting Resin for IP67 Slim J-Box

* Refer to **Exterior Junction Boxes** on **Accessories** pages

PSU/Driver

DALI/DMX

* Refer to **Driver/PSU Options** page for details or provide requirement and KKDC to offer the suitable option

LED ENGINE VARIANTS (LED STRIP TYPE)

Colour	LED	Lumen/m	Lumen/ft	W/m	W/ft	Spec Doc	Length	Increment
Single CCT	R007	229	70	7.0	2.13	MIMI Poki R007	103-2020mm (4.05-79.53in)	41.7mm (1.64in)
	R014	478	146	14	4.27	MIMI Poki R014	103-2020mm (4.05-79.53in)	41.7mm (1.64in)
	R020	689	210	20	6.10	MIMI Poki R020	103-2020mm (4.05-79.53in)	41.7mm (1.64in)
Warm Dim/Dynamic White	R207	556	170	16	4.88	MIMI Poki R207	103-2020mm (4.05-79.53in)	83.3mm (3.28in)
RGB	501	Red 50 Green 107 Blue 18 RGB 155	Red 15 Green 33 Blue 5 RGB 47	15.6	4.75	MIMI Poki RGB	103-2020mm (4.05-79.53in)	83.3mm (3.28in)

* Performance data: clear cover, RGB

MIMI Poki RGB

Length Availability List

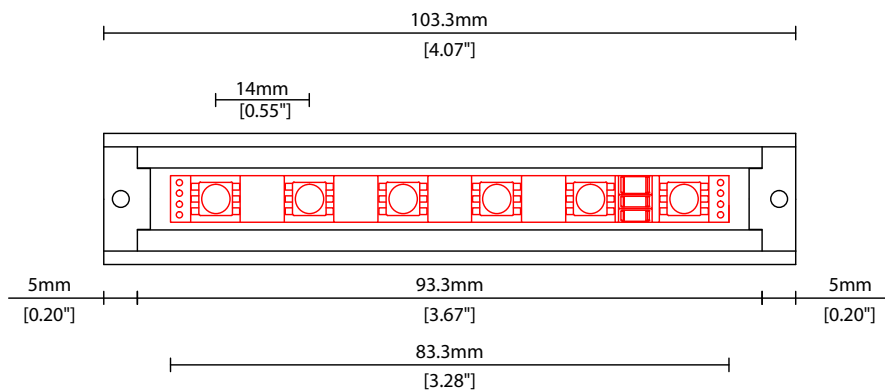


Length Code		Fixture Length ¹		LED Strip ²		End Cap Dimension ³		Wattage (W)	Output (lm)			
Metric	Imperial(US)	Metric	Imperial(US)	Metric	Imperial(US)	Metric	Imperial(US)		R	G	B	W
m0103	i0004	103mm	4.07in	83mm	3.28in	10mm	0.39in	1.30	4	9	2	13
m0187	i0007	187mm	7.35in	167mm	6.56in	10mm	0.39in	2.60	8	18	3	26
m0270	i0011	270mm	10.63in	250mm	9.84in	10mm	0.39in	3.90	13	27	5	39
m0353	i0014	353mm	13.91in	333mm	13.12in	10mm	0.39in	5.20	17	36	6	52
m0437	i0017	437mm	17.19in	417mm	16.40in	10mm	0.39in	6.50	21	45	8	65
m0520	i0020	520mm	20.47in	500mm	19.69in	10mm	0.39in	7.80	25	54	9	78
m0603	i0024	603mm	23.75in	583mm	22.97in	10mm	0.39in	9.10	29	62	11	90
m0687	i0027	687mm	27.03in	667mm	26.25in	10mm	0.39in	10.40	33	71	12	103
m0770	i0030	770mm	30.31in	750mm	29.53in	10mm	0.39in	11.70	38	80	14	116
m0853	i0034	853mm	33.60in	833mm	32.81in	10mm	0.39in	13.00	42	89	15	129
m0937	i0037	937mm	36.88in	917mm	36.09in	10mm	0.39in	14.30	46	98	17	142
m1020	i0040	1020mm	40.16in	1000mm	39.37in	10mm	0.39in	15.60	50	107	18	155
m1103	i0043	1103mm	43.44in	1083mm	42.65in	10mm	0.39in	16.90	54	116	20	168
m1187	i0047	1187mm	46.72in	1167mm	45.93in	10mm	0.39in	18.20	58	125	21	181
m1270	i0050	1270mm	50.00in	1250mm	49.21in	10mm	0.39in	19.50	63	134	23	194
m1353	i0053	1353mm	53.28in	1333mm	52.49in	10mm	0.39in	20.80	67	143	24	207
m1437	i0057	1437mm	56.56in	1417mm	55.77in	10mm	0.39in	22.10	71	152	26	220
m1520	i0060	1520mm	59.84in	1500mm	59.06in	10mm	0.39in	23.40	75	161	27	233
m1603	i0063	1603mm	63.12in	1583mm	62.34in	10mm	0.39in	24.70	79	169	29	245
m1687	i0066	1687mm	66.40in	1667mm	65.62in	10mm	0.39in	26.00	83	178	30	258
m1770	i0070	1770mm	69.69in	1750mm	68.90in	10mm	0.39in	27.30	88	187	32	271
m1853	i0073	1853mm	72.97in	1833mm	72.18in	10mm	0.39in	28.60	92	196	33	284
m1937	i0076	1937mm	76.25in	1917mm	75.46in	10mm	0.39in	29.90	96	205	35	297
m2020	i0080	2020mm	79.53in	2000mm	78.74in	10mm	0.39in	31.20	100	214	36	310

¹ Actual total overall length of light fixture (LED strip + end caps + void/wire hole)

² Actual length of PCB strip

³ Actual length of 2x end caps



Linear

MIMI Poki RGB Options

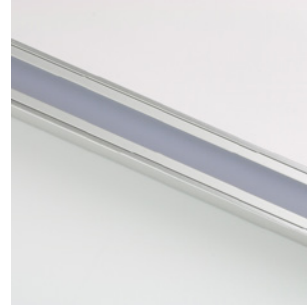
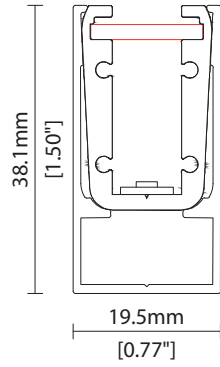
KKDC

COVER/LENS OPTIONS

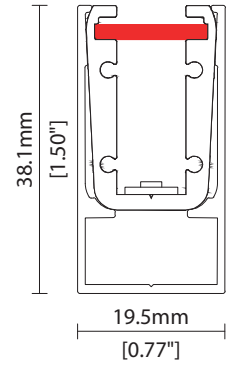
* Options are an integral part of the fixture ordering codes. Please refer to **Code Table** pages.



B Clear cover
Polycarbonate cover
W19.5/H38.1mm (W0.77"/H1.50")



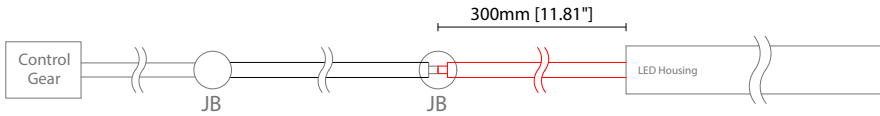
C Diffused Cover
Polycarbonate cover
W19.5/H38.1mm (W0.77"/H1.50")



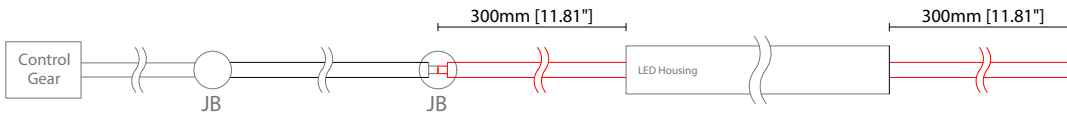
POWER FEED OPTIONS

* Options are an integral part of the fixture ordering codes. Please refer to **Code Table** pages.

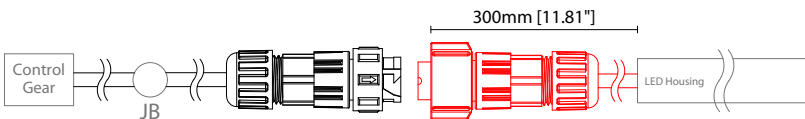
0300 S00A 300mm (11.81") Single \varnothing 4.3mm sheath tail



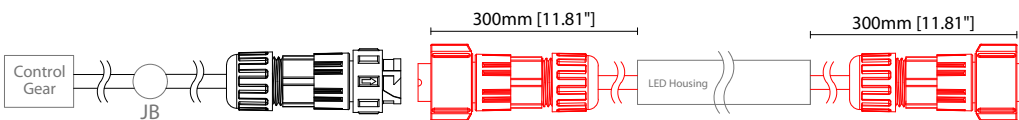
0300 D00A 300mm (11.81") Double \varnothing 4.3mm sheath tail



0300 S67A 300mm (11.81") Single \varnothing 4.3mm sheath IP67 connector

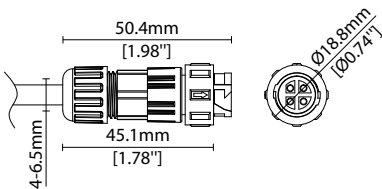


0300 D67A 300mm (11.81") Double \varnothing 4.3mm sheath IP67 connector

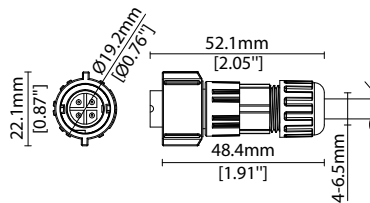


IP67 4 Pin Connector

Female connector
4 PIN (IP67)



Male connector
4 PIN (IP67)



Key

Control Gear Power supply, sub-controllers & control systems

JB Junction box / cable connection

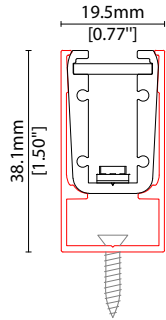
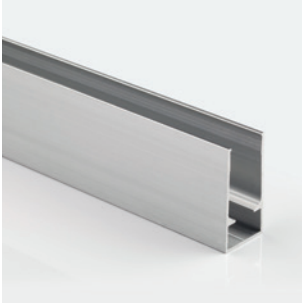
Linear

MIMI Poki RGB Accessories

KKDC

MOUNTING ACCESSORIES

Note: Accessories are to be ordered separately with corresponding code shown below.



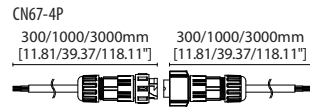
KKCR-02*

Channel
Anodised aluminium finish

W19.5/H38.1mm
(W0.77/H1.5")

* Specify length to match MIMI Poki

POWER FEED



CN67-4P-0300 300mm (11.81in) pair
CN67-4P-1000 1000mm (39.37in) pair
CN67-4P-3000 3000mm (118.11in) pair

IP67

4 PIN male + female (RGB/LEDmix) connector set

EXTERIOR JUNCTION BOXES



KKJB-07

IP67 Slim J-Box
(including type A,B,C,D bushings)



KKJB-07R

Potting resin for IP67 Slim J-Box

KKDC CONTROL



KKDM-06 1-10V

visDIM dimmable sub-controller
(4 x 8A max @ 12-36V)

IP20
Plastic housing
L170/W59/H29mm
(L6.69/W2.32/H1.14in)



KKSC-05 DMX

visDIM dimmable sub-controller
(4 x 5A max @ 12-36V)

IP20
Plastic housing
L170/W53.4/H28mm
(L6.69/W2.10/H1.10in)



KKDL-02 DALI

visDIM dimmable sub-controller
(4 x 8A max @ 12-36V)

IP20
Plastic housing
L170/W59/H29mm
(L6.69/W2.32/H1.14in)



KKDL-03 DALI

visDIM dimmable sub-controller
(4 x 5A max @ 12-36V)

IP20
Plastic housing
L166/W53.4/H23mm
(L6.54/W2.10/H0.91in)

AVAILABLE PSU OPTIONS

Control Mode	PSU (Order Code)	Input Voltage AC	Output Voltage DC	Rated Output Current	Rated Power	Dim %	IP Rating
Switched	CEN-60-24	90-295V	24V	2.5A	60W	-	IP67
	HLG-60H-24	90-305V	24V	2.5A	60W	-	IP67
	HLG-100H-24	90-305V	24V	4.0A	100W	-	IP67
	HLG-150H-24	90-305V	24V	6.3A	150W	-	IP67
	HLG-240H-24	90-305V	24V	10A	240W	-	IP67
0-10V (1-10V)	PWM-40-24	90-305V	24V	1.67A	40W	100-0.15 (100-10)	IP67
	PWM-60-24	90-305V	24V	2.5A	60W	100-0.15 (100-10)	IP67
	PWM-90-24	90-305V	24V	3.67A	90W	100-0.15 (100-10)	IP67
	PWM-120-24	90-305V	24V	5.0A	120W	100-0.15 (100-10)	IP67
DALI	LIN100A1	120-277V	24V	1A per channel	100W	100-0.1	IP66/IP40
DMX RGB	LIN100A1	120-277V	24V	1.33A per channel	100W	100-0.1	IP66/IP40
DMX RGBW	LIN100A1	120-277A	24V	1A per channel	100W	100-0.1	IP66/IP40

Flicker Free Options - Combination of PSU+ sub-controller

Control Mode	PSU (Order Code)	Sub-controller (Order Code)	Input Voltage AC	Output Voltage DC	Rated Output Current	Rated Power	Dim %	IP Rating PSU/ Sub-controller
0-10V or 1-10V	CEN-60-24	KKDM-06	90-295V	24V	2.5A	60W	100-0.9	IP67/IP20
	HLG-60H-24	KKDM-06	90-295V	24V	2.5A	60W	100-0.9	IP67/IP20
	HLG-100H-24	KKDM-06	90-295V	24V	4.0A	100W	100-0.9	IP67/IP20
	HLG-150H-24	KKDM-06	90-295V	24V	6.3A	150W	100-0.9	IP67/IP20
	HLG-240H-24	KKDM-06	90-295V	24V	10.0A	240W	100-0.9	IP67/IP20
DALI	CEN-60-24	KKDL-02/03	90-295V	24V	2.5A	60W	100-0.1	IP67/IP20
	HLG-60H-24	KKDL-02/03	90-305V	24V	2.5A	60W	100-0.1	IP67/IP20
	HLG-100H-24	KKDL-02/03	90-305V	24V	4.0A	100W	100-0.1	IP67/IP20
	HLG-150H-24	KKDL-02/03	90-305V	24V	6.3A	150W	100-0.1	IP67/IP20
	HLG-240H-24	KKDL-02/03	90-305V	24V	10.0A	240W	100-0.1	IP67/IP20
DMX RGB	CEN-60-24	KKSC-05	90-295V	24V	2.5A	60W	100-0.9	IP67/IP20
	HLG-60H-24	KKSC-05	90-305V	24V	2.5A	60W	100-0.9	IP67/IP20
	HLG-100H-24	KKSC-05	90-305V	24V	4A	100W	100-0.9	IP67/IP20
	HLG-150H-24	KKSC-05	90-305V	24V	6.3A	150W	100-0.9	IP67/IP20
	HLG-240H-24	KKSC-05	90-305V	24V	10.0A	240W	100-0.9	IP67/IP20

¹ The items shown above cover the most frequently used specification but does not exhaust the possible options

² PSU and/or driver can be chosen from the table, or KKDC may recommend the best option upon receipt of the controls requirement and installation environment

³ Electrical shop drawing will include detailed information of PSU and relevant control drivers

⁴ Cut sheets are available on the controls section of www.kkdc.lighting or upon request